



Hydrogen Hot Rodding

PARTS & SPARES MENU AUTUMN 2019



**Note Rare High Technology Parts are Subject to
Co Operation, Communication, Planning and Availability.**



Welcome

Initial schedule is to focus Circuit Board Distribution hydrogen and mixed gas engines and turbines We have several variations to the technology, depending on the scale and size demands of each project.

The following are key engine and fueling products we offer for your prompt decision

and start. It should be noted we focus on Hydrogen Fueled from Tanks, ON demand and or Gas Grids along with Ammonia fueled. In addition, we would like to mention and invite your requests and order support on biomass, biogas and natural lpg engine ordering. As it further strengthens h2 product base progression to stay in place and team busy.

We have from 20 kw to 3 mw sizes of engines 4 cylinder to v18 in a variety of engine brands which we convert with our technologies.

If you would like these item's I invite you to order and commence promptly to allow me time to change my Q4 schedule and discuss with my team the work and focus on building and creating these for you before we break for Christmas New Year .

Terms are purchase order, than final order invoice issue is issued.

Small Items Paypal or western union

Large items

- Pay 60 % deposit for each item ordered
- Ad 40% prior to export on SGS inspection and ship schedule being issued.

Hope you will seize the timing and offers and commence

Piece list Attached

Warm Regards

Daniel Donatelli

Founder





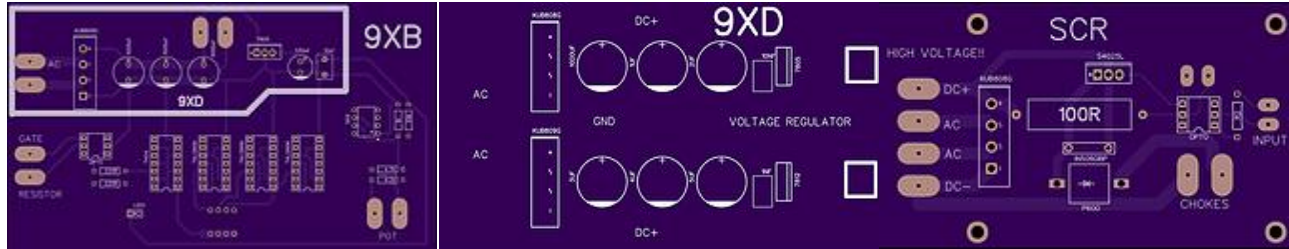
INDEX

Accelerator Parts	Gas Gun Parts	Water Fuel Cells
Alternator Parts	Gas Processor Parts	Water Pump Parts
Books	Gas EPG and Others	Water Tank Parts
Buggy Kits & Parts	Heater Parts	GMS Circuit Boards
Circuits and Parts	Hot Rod Kits & Parts	EPG Circuit Boards
Control Valve Parts	Injector Parts	
Distributor ignition Parts	Lab Equipment & Tools	
Ecu Parts	Separation Membranes	
EGR Parts	Quenching Parts	
Electron Extraction Parts	Refrigeration Parts	
EPG Parts	Safety Parts	
Exhaust Reclaimer Parts	Steam Resonator Parts	
Gas Battery Parts	Transformer Choke Parts	





Gas Production Circuit Boards



Circuit Boards

		Price	Part No SKU
• Stanley Meyer VIC Circuit	\$980 (Circuit board populated New)	\$980	SKU # MP 201
• 8XA Circuit board	un populated	\$120	SKU # MP 204
• 9XB Circuit board	un populated	\$120	SKU # MP 204
• 9XA Voltage Board	un populated	\$80	SKU # MP 207
• 9XD Voltage Board	un populated	\$80	SKU # MP 207
• H Bridge	un populated	\$150	SKU # MP 205
• SCR Board	un populated	\$80	SKU # MP 206
• 7 LED Gas Processor Array	per board un populated	\$15	SKU # MP 209
• 14 LED Gas Processor Array	per board un populated	\$25	SKU # MP 200
• 16 LED Gas Processor Array	per board un populated	\$35	SKU # MP 210
• Alternator Circuit board	un populated	\$150	SKU # MP 211
• Mosfet Switch Board	un populated	\$150	SKU # MP 212
• Vic Switch Board	un populated	\$150	SKU # MP 213
• Electron Extract Board	un populated	\$150	SKU # MP 214

Order Circuits from Secure Supplies is the Best place to start your

Stanley Meyer Collection and Hydrogen Hot Rodding work.

Notes

It has taken many peoples time and many years to re-create, maintain and save these technologies from what Stanley A Meyer did over a 20 year period.

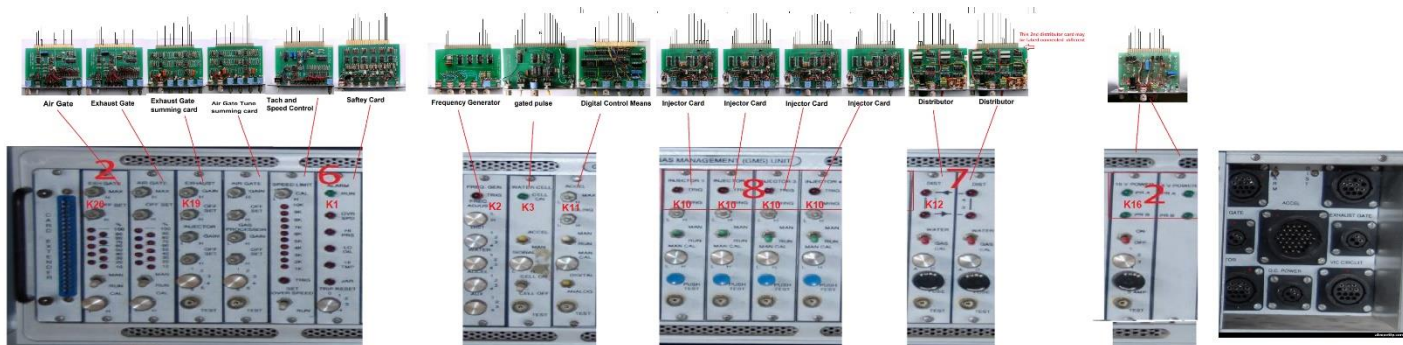
These circuits are now public for use to make water fuels, they are mass produced by Secure Supplies and being Sold via this price list. Advances are being made and your support helps further accelerate their application development and use.

Currently October 2019 we are selling unassembled boards and provide where possible

a Bill of materials list for ordering parts from Mouser or Digi Key With your Support we will be offer fully assembled boards case by case as we evolve the production.



GMS Gas Management System Circuit Boards



GMS Circuit Boards

- Stanley Meyer GMS Set \$980
- Power Control Board
- Distributor 1
- Distributor 2
- Accelerator Card
- Injector Cards 1 2 3 4
- Frequency Generator
- Speed Control Taco
- Safety Control Card
- Exhaust Gate Control Circuit Board
- Exhaust Gate Summing Circuit Board
- Air intake Gate Control Circuit
- Alternator Gate Summing Circuit Board
- Card Extender Circuit Board
- Plug Connector Set
- GMS Case
- Pre Cut Allow to mount cards
- Labels Stickers for GMS Cards

Price	Part No SKU
\$980	SKU # MP 215
\$80	SKU # MP 216
\$120	SKU # MP 217
\$120	SKU # MP 218
\$120	SKU # MP 219
\$150	SKU # MP 220
\$80	SKU # MP221
\$120	SKU # MP 222
\$120	SKU # MP 223
\$120	SKU # MP 224
\$120	SKU # MP 225
\$120	SKU # MP 226
\$120	SKU # MP 227
\$120	SKU # MP 228
\$120	SKU # MP 229
\$120	SKU # MP 230
\$120	SKU # MP 231
\$120	SKU # MP 232

Notes

Stanley Meyer GMS Unit The Gas Management System was create before we had EGR valve Ecu and Fuel Injection controls.

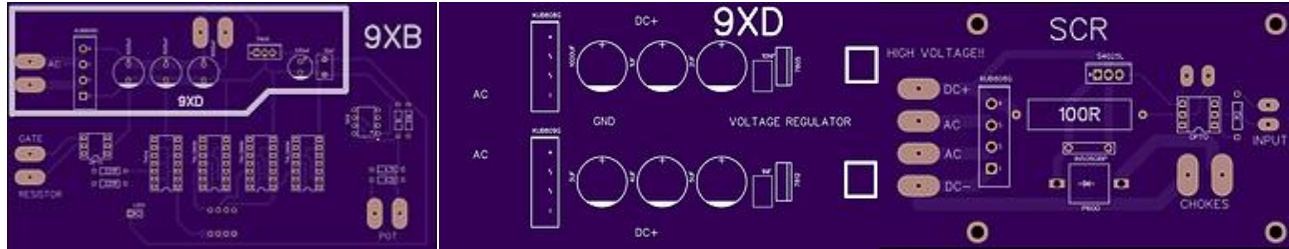
Whilst most of the circuit or techniques shown in it are in or able to be in Modern circuit or ems /ecu units. It still is the very best way to study how to build and adapt application to water fueling.

We are proud to have recreated these items for your further study and use.

We your order Support to preserve advance and share these techniques and water fueling tools we will develop and offer a modern version soon.



EGP Circuit Boards



Circuit Boards

- Stanley Meyer VIC Circuit \$980 (Circuit board populated New)
- Stanley Meyer C Cores 2000 Perm \$180 each you need 2 pc
- Stanley Meyer E Core 2000 Per for set come with wire to wrap
- Circuit board un populated 9XB
- H Bridge un populated

Price

\$980
\$280
\$120
\$120
\$150

Part No SKU

SKU # MP 233
SKU # MP 234
SKU # MP 235
SKU # MP 236
SKU # MP 237

Accelerator Controls



Accelerator Controls

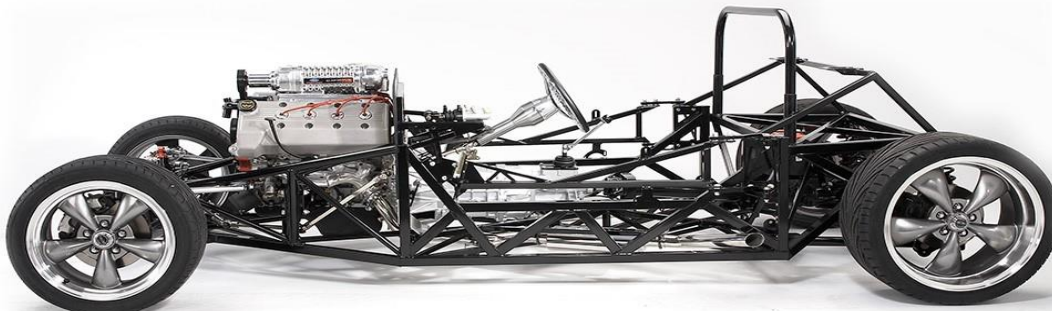
- Digital Accelerator Pedal
- Accelerator Mounting Bracket
- Hall Sensor Accelerator PWM Control board
- Stanley Meyers Hall Sensor Circuit.

Price

\$195
\$39
\$90
\$80

Part No SKU

SKU # MP 238
SKU # MP 239
SKU # MP 240
SKU # MP 241





ROUND WFC Cell Voltrolysis Units



Original ROUND WFC Cell Voltrolysis Units

- 11 Cell Round 4 inch
- 11 Cell Round 8 inch
- 11 Cell Round 16 inch
- 11 Cell Round 18 inch
- Nano Bubble Tube Caps
- Pressure Release Valve Assembly
- Electron Extract Caps
- Quartz Tube dielectric liner
- Vanish/Ceramic DBD Coating Fluid
- Adjusted Anode for Quartz version

Price

\$1650
\$1750
\$2400
\$2800
\$45
\$250
\$19
\$12
\$45
\$45

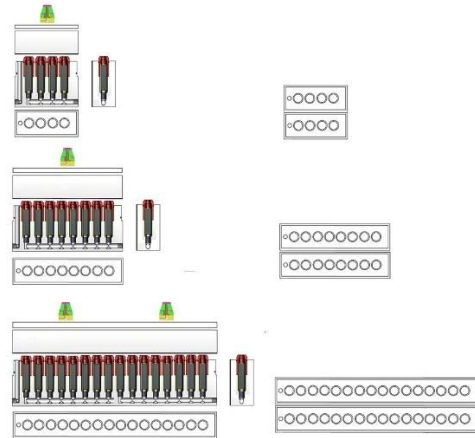
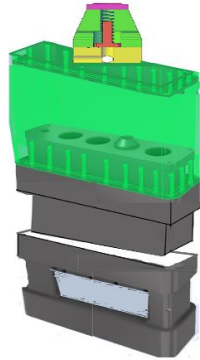
Part No SKU

SKU # MP 242
SKU # MP 243
SKU # MP 244
SKU # MP 245
SKU # MP 246
SKU # MP 247
SKU # MP 248
SKU # MP 249
SKU # MP 250
SKU # MP 251





FLAT WFC Cell Voltrolysis Units



FLAT WFC Cell Voltrolysis Units

- 4 inch
- 8 inch
- 16 inch
- 18 inch
- Nano Bubble Tube Caps
- Pressure Release Valve Assembly
- Electron Extract Caps
- Quartz Tube dielectric liner
- Vanish/Ceramic DBD Coating Fluid
- Adjusted Anode for Quartz version

Price

\$850
\$950
\$1200
\$1400
\$45
\$250
\$49
\$12
\$45
\$45

Part No SKU

SKU # MP 252
SKU # MP 253
SKU # MP 254
SKU # MP 255
SKU # MP 256
SKU # MP 257
SKU # MP 258
SKU # MP 259
SKU # MP 260
SKU # MP 261





Original Tube Cell



Original Tube Cell

- Tube Cell Stanley Meyer Replica 9 tube Cell Exact Replicate
- Rare and hand made take 2 to 3 months to make
- Quartz Tube dielectric liner
- Vanish/Ceramic DBD Coating Fluid

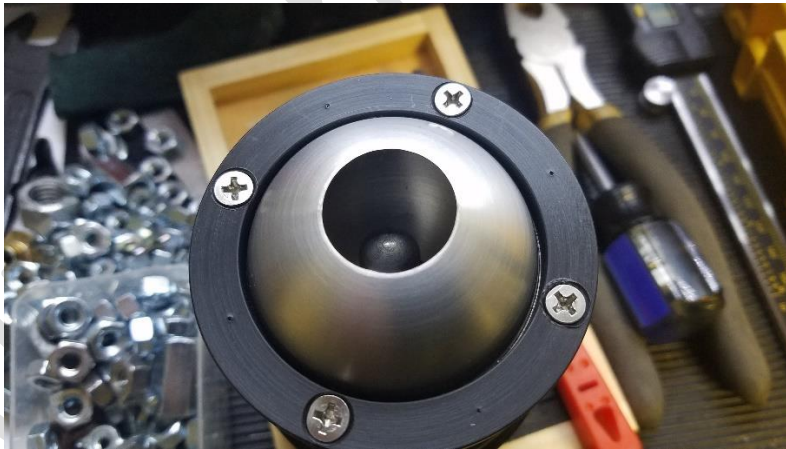
Price
\$2500

Part No SKU
SKU # MP 262

\$12
\$45

SKU # MP 263
SKU # MP 264

WFC Sphere



WFC Sphere

- Replica of Stanley Meyer Sphere Cell

Price
\$900

Part No SKU
SKU # MP 265



Pressurized Water Tank



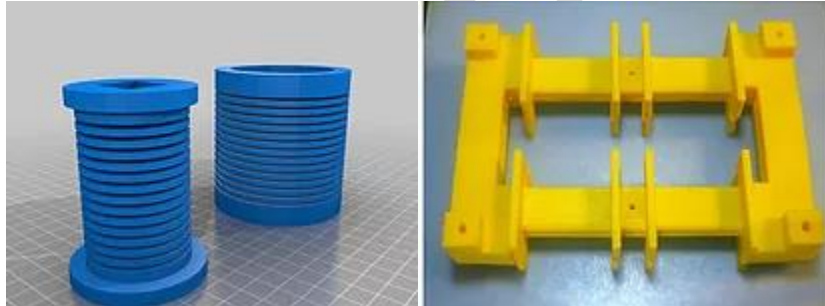
Pressurized Water Tank

- Pressure Water Tank

Price
\$680

Part No SKU
SKU # MP 266

Bobbins Transformer and Choke



Bobbins Transformer and Choke

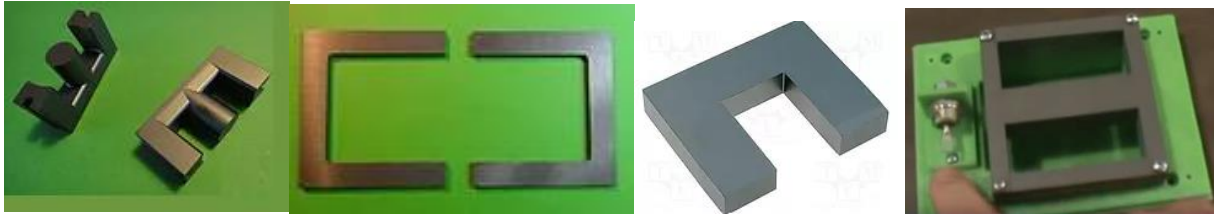
- Vic U Core
- Vic Round

Price
\$220
\$300

Part No SKU
SKU # MP 267
SKU # MP 268



Transformer and Choke Cores



Transformer and Choke Cores

- E Core for Chokes
- U Cores For Vic Original
- U Cores For Vic New Version
- Laminated Cores Round VIC

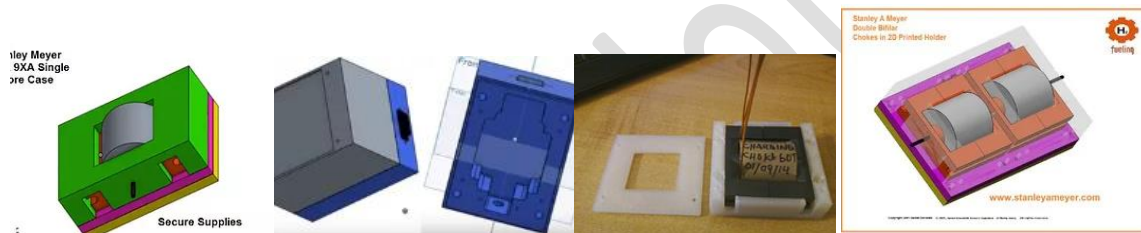
Price

\$80
\$170
\$170
\$200

Part No SKU

SKU # MP 269
SKU # MP 270
SKU # MP 271
SKU # MP 272

Transformer and Choke Housings and Case holders



Transformer and Choke Housings and Case holders

- Vic Round Bobbin Aluminum Case
- Twin E Core Case
- Single E Core Case

Price

\$350
\$120
\$60

Part No SKU

SKU # MP 273
SKU # MP 274
SKU # MP 275

Wire



Wire

- Stainless wire Coated
- Copper Wire Size AWG 30
- Copper Wire Size AWG 29

Price

\$500
\$300
\$280

Part No SKU

SKU # MP 276
SKU # MP 278
SKU # MP 279



Quenching Tube Crystal Photonic



Quenching Tube Crystal Photonic Tube Exclusive to Secure Supplies 35 Um

- 3/8 OD Tube 1 meter lengths
- 1/2 OD Tube 1 meter lengths
- Tube Cutting Tool
- Quenching Disks 40 micron

Price	Part No SKU
\$200	SKU # MP 280
\$200	SKU # MP 281
\$1200	SKU # MP 282
\$40	SKU # MP 283

Quenching Tube Fittings



Quenching Tube Fittings

- End 3/8 to 3/8 thread
- T pc 3/8
- Berret plastic
- Manifold blocks 4
- Manifold blocks 6
- Manifold blocks 8
- Quenching Disks Fitting Kit

Price	Part No SKU
\$23	SKU # MP 284
\$28	SKU # MP 285
\$4	SKU # MP 286
\$56	SKU # MP 287
\$60	SKU # MP 288
\$80	SKU # MP 289
\$75	SKU # MP 290





Flash Ares-tor unit



Flash Ares-tor unit

- Flash Arrestor fine thread 99.9999% h2 6 Bar 3/8 NPT-F
- Service and Tester Unit

Price
\$480
\$1280

Part No SKU
SKU # MP 291
SKU # MP 292

Catalytic Block & Ceramic Foam

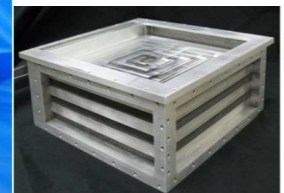
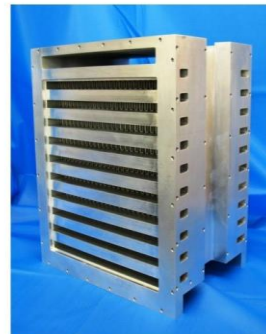


Figure 1: 30 kW catalytic heater reactor (left) and recuperator (right).

Catalytic Block & Ceramic Foam

- Ceramic Foam Blocks/ Briquettes to Radiate Heat
- Catalytic Coper Cores For Heat
- Catalytic Stack Heat Exchangers

Price
\$180
\$180
\$1180

Part No SKU
SKU # MP 293
SKU # MP 294
SKU # MP 295



Mini Gas Turbine



Mini Gas Turbine Multi Stage

- 75 kw **Mini Gas Turbine**
- 50 kw **Mini Gas Turbine**

Price	Part No SKU
\$23,900	SKU # MP 296
\$19,500	SKU # MP 297

Dual Ignition Parts | Laser Distributor



Dual Ignition Parts | Laser Distributor

- VW Ignition Riser Spacer **Original**
- VW Hall Sensor conversion kit

Price	Part No SKU
\$280	SKU # MP 298
\$480	SKU # MP 299

Ignition system needs very low ignition energy to ignite Hydrogen, And should use surface gap copper or Iridium Coldest rated plugs Inductive type smart ignition coils are used in our application as they eliminate any residual voltage after the spark delivery. This is very much required for the hydrogen engine as any secondary unintended sparks caused due to residual voltage can lead to back fire Since platinum acts as a catalyst causing the hydrogen to oxidize with air, hence platinum tipped spark plugs should not be used. Hence, in our current Hydrogen engine we have used cold rated Iridium tipped spark plugs. Copper electrode can cause corrosion due to the water vapor formation in Hydrogen engine and hence iridium tipped spark plugs NGK Models NGK Bue2322 and or NGK BUHW-2 S25/702



HHO Hydrogen gas Injectors



HHO Hydrogen gas Injectors

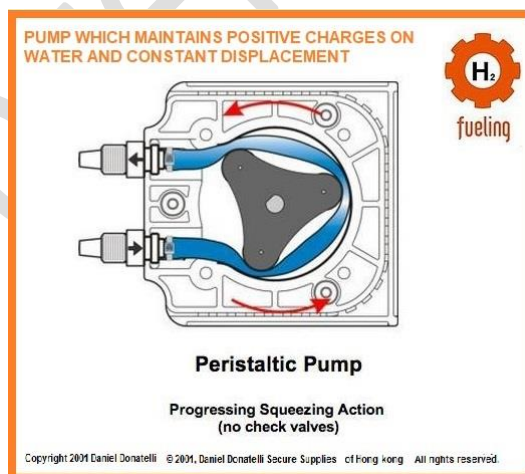
- Stanley Meyer Replication Part Injector
- Spark Plug Gas Adapter Current Status on Hold
- Standard h2 Injectors
- Hi Flow H2 Injectors
- Sapphire Atomizer Dry Fog Tips

Price

Part No SKU

\$1200	SKU # MP 300
\$180	SKU # MP 301
\$280	SKU # MP 302
\$260	SKU # MP 303

Water Pumps



Water Pumps

- Static Free Pump Injectors 120 PSI

Price

Part No SKU

\$520	SKU # MP 304
-------	--------------



ECU KIT



ECU KIT

- 1 Cylinder
- 2 Cylinder
- 4 Cylinder
- 6 Cylinder
- 8 Cylinder
- 12 cylinder
- 16 cylinder

Price

\$150
\$350
\$550
\$600
\$800
\$2200
\$2500

Part No SKU

SKU # MP 305
SKU # MP 306
SKU # MP 307
SKU # MP 308
SKU # MP 309
SKU # MP 310
SKU # MP 311

Fuel Injection Parts



Fuel Injection Parts

- Knock Sensor
- Maf Sensor
- Map Sensor
- Oxygen sensor Adjusted due
- Cummins 6YBT Gas engine covert adapter Nozzle array

Price

\$45
\$52
\$25
\$32
\$332

Part No SKU

SKU # MP 312
SKU # MP 313
SKU # MP 314
SKU # MP 315
SKU # MP 316

Lambda Sensor Narrowband switching type lambda sensor of base engine is replaced with universal wideband oxygen sensor. As in our hydrogen engine we are operating in the equivalence ratio range of 0.5 ~ 0.6, narrowband oxygen sensor can't be used. As a narrowband oxygen sensor doesn't show the exact lambda value and it is widely used for lambda values of one operation.



Fuel Rail Buffer Tanks



Fuel Rail Buffer Tanks

- Carbon Fibre
- Alloy Fiber
- Tank Adaptor to rail

Price

Part No SKU

\$240

SKU # MP 317

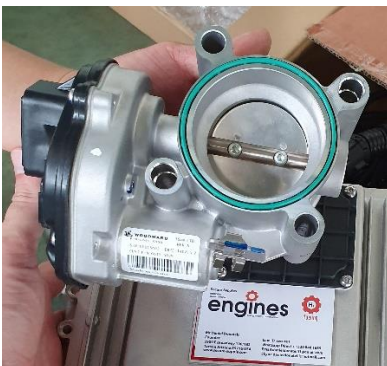
\$240

SKU # MP 318

\$240

SKU # MP 319

Throttle Body TPS in built



SLIDE Throttle Bodies



Throttle Body TPS in built

- 22 mm
- 24 mm
- 26 mm
- 32 mm
- 35 mm

Price

Part No SKU

\$240

SKU # MP 320

\$255

SKU # MP 321

\$265

SKU # MP 322

\$320

SKU # MP 323

\$380

SKU # MP 324



Variacs



Variacs

- Variac 5 amp 150 volt \$ 150 Original model
- Variac 10 amp 600 volt

Price

\$180
\$ 220

Part No SKU

SKU # MP 325
SKU # MP 326

10 XA 9XB and 9XA Box



1 0 XA 9XB and 9XA Box

- 10XA Box un assemble box only
- 10XA Box Complete
- 9XB Box un assemble box only
- 9XB Box Complete
- 9XA Box un assemble box only
- 9XA Box Complete
- 9XAA DOUBLE VARIAC
- Label Stickers for Front of Box 1 pc large Sticker to correct size
- clear white or black with black white or gold Lettering

Price

\$500
\$600
\$700
\$800
\$900
\$950
\$1800
\$20

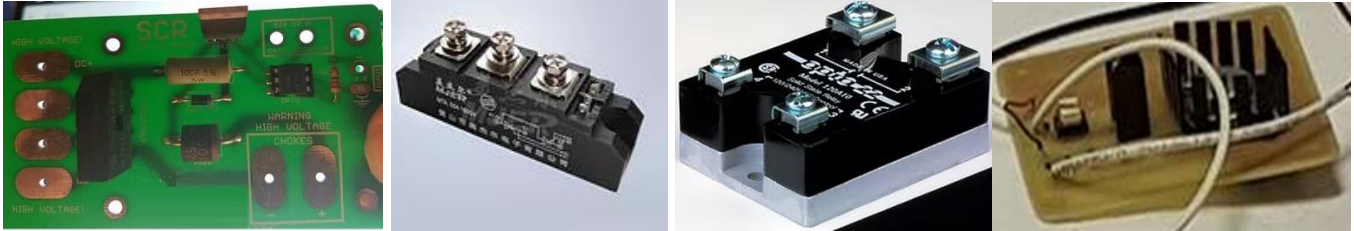
Part No SKU

SKU # MP 327
SKU # MP 328
SKU # MP 329
SKU # MP 330
SKU # MP 331
SKU # MP 332
SKU # MP 332D
SKU # MP 333





Transistor Switchers



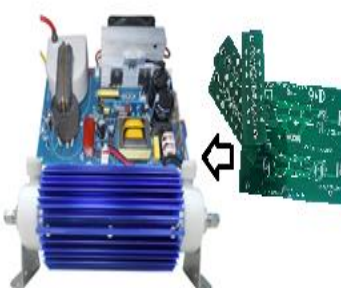
Transistor Switchers

	Price	Part No SKU
• Fast Solid State	\$80	SKU # MP 334
• SCR	\$55	SKU # MP 335
• Vic Daughter Transistor Switch Board	\$55	SKU # MP 335
• DC60S3 - SOLID STATE	\$45	SKU # MP 336
• MTA55A SCR Thyristor Module Mta55A1600V to 1800v		
• \$11 to \$18 Switch Device http://greegoo.en.busytrade.com/	\$18	SKU # MP 337
• (Note two SCR's will also do the job just not as efficiently.)		





Gas Processor



Gas Processor

	Price	Part No SKU
• 3d Printed Replica	\$250	SKU # MP 338
• Replacement Diaphragm kit	\$45	SKU # MP 339
• Replacement Diaphragm kit	\$45	SKU # MP 340
• Replacement Diaphragm kit	\$45	SKU # MP 341
• Replacement Diaphragm kit	\$45	SKU # MP 242
• Replacement Diaphragm kit	\$45	SKU # MP 243
• Replacement Diaphragm kit	\$45	SKU # MP 245
• Replacement Diaphragm kit	\$45	SKU # MP 246
• 7 LED Gas Processor Array per board un populated	\$15	SKU # MP 247
• 14 LED Gas Processor Array per board un populated	\$25	SKU # MP 248
• 16 LED Gas Processor Array per board un populated	\$35	SKU # MP 249
• Led Driver Board	\$35	SKU # MP 250
• Pic Second Pulse	\$775	SKU # MP 251
• Electron Extraction Circuit	\$75	SKU # MP 252
• Mesh Extract Grid	\$75	SKU # MP 253
• In Line Electron Extraction	\$75	SKU # MP 254



Hydrogen Hot Rod Specialty Performance Vehicles



Gas Gun

Engine Intake Treatment Unit



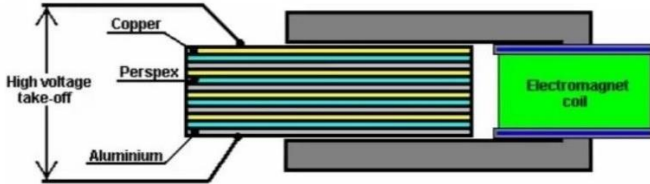

Postive Earth Case and inlet ball valve vacuum actuation

Copyright 2001 Daniel Donatelli © 2001, Daniel Donatelli Secure Supplies of Hong Kong All rights reserved.

Stanley Meyer Electron Extraction Pick up Design

One very interesting fact which has been reported by the Swiss group is that if a series of copper, aluminium and Perspex sheets are placed in a magnetic field, they generate a high voltage. This is worth investigating. It is not clear if the magnetic field should be constant or oscillating. The sequence of plates is said to be: cpacpacpacpa ('c' being copper, 'p' being 'Perspex' (acrylic or 'Plexiglas') and 'a' being aluminium).

The following set-up might be worth investigating:



Copyright 2001 Daniel Donatelli © 2001, Daniel Donatelli Secure Supplies of Hong Kong All rights reserved.

Gas Gun

- Case Stainless and Glass
- Electron Extract Pickup Single
- Electron Extract Pickup Double
- Vacuum Operated Air gate

Price

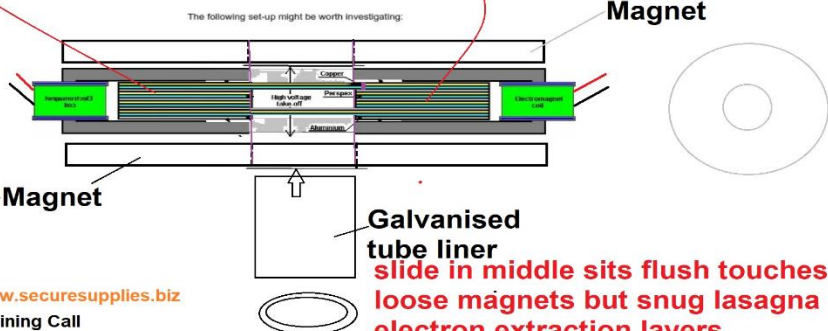
Part No SKU

\$1200	SKU # MP 255
\$100	SKU # MP 256
\$200	SKU # MP 257
\$42	SKU # MP 258

Stanley Meyer Electron Extraction Pick up Design 2018

One very interesting fact which has been reported by the Swiss group is that if a series of copper, aluminium and Perspex sheets are placed in a magnetic field, they generate a high voltage. This is worth investigating. It is not clear if the magnetic field should be constant or oscillating. The sequence of plates is said to be: cpacpacpacpa ('c' being copper, 'p' being 'Perspex' (acrylic or 'Plexiglas') and 'a' being aluminium).

The following set-up might be worth investigating:



Magnet

Magnet

Galvanised tube liner

slide in middle sits flush touches loose magnets but snug lasagna electron extraction layers

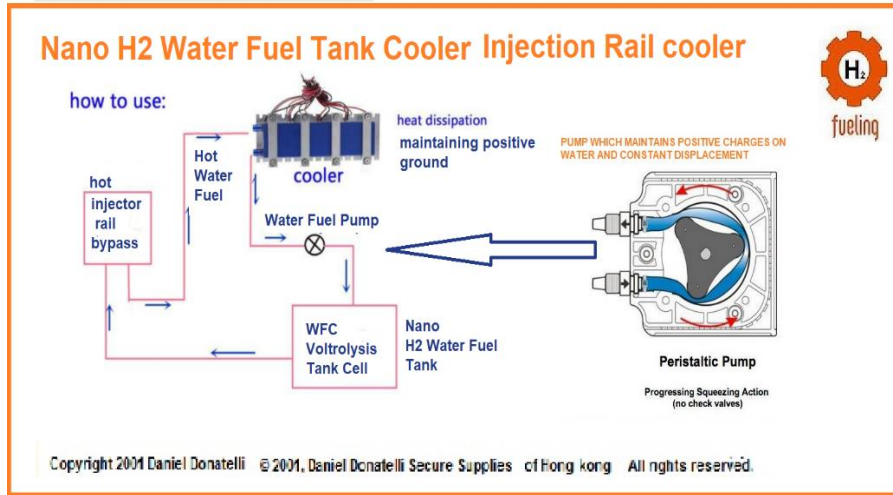
www.securesupplies.biz

Training Call

Copyright 2001 Daniel Donatelli © 2001, Daniel Donatelli Secure Supplies of Hong Kong All rights reserved.



Refrigeration



Refrigeration

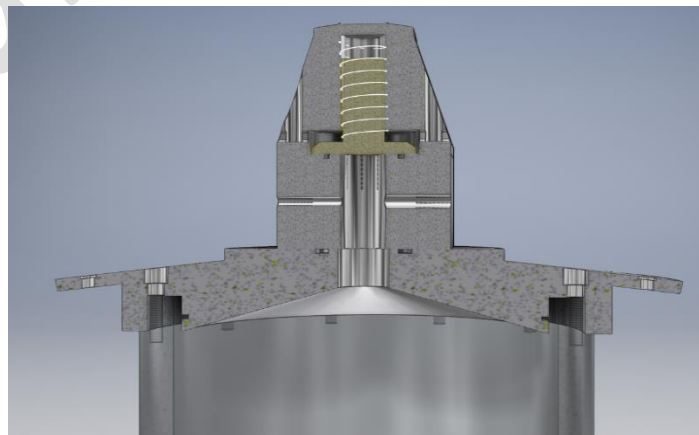
- System for water tank

Price

Part No SKU

\$290

SKU # MP 259





Gauges



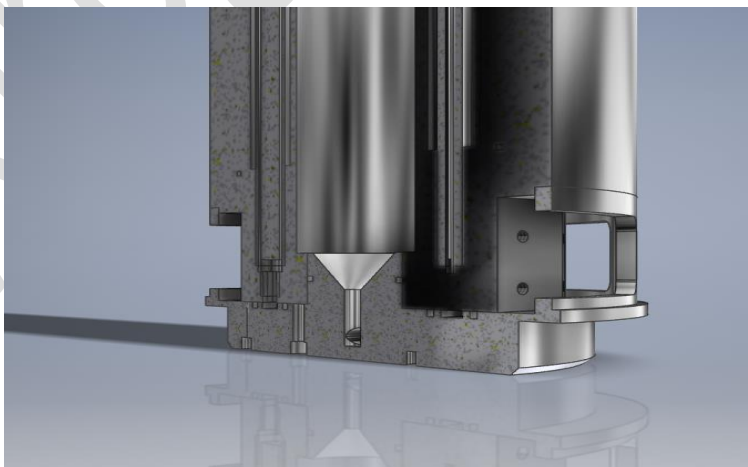
Gauges

- Positive Ground Oil Pressor Sensor
- Analogue Water Level Gauge
- Digital Water level Gauge
- Analogue Amp kit Meter Gauge
- Digital Amp Meter Gauge
- Analogue Volt Meter Gauge
- Digital Volt Meter Gauge
- Analogue Temp Gauge
- Digital Temp Gauge
- Multi Gauge Digital Temp Volt Amp
- Analogue Pressure Gauge
- Digital Pressure Gauge
- Analogue Vacuum Gauge
- Digital Vacuum Gauge
- Vacuum Transducer
- Pressure Transducer

Price

Part No SKU

\$45	SKU # MP 260
\$45	SKU # MP 261
\$75	SKU # MP 262
\$45	SKU # MP 263
\$75	SKU # MP 264
\$45	SKU # MP 265
\$55	SKU # MP 267
\$45	SKU # MP 268
\$65	SKU # MP 269
\$88	SKU # MP 270
\$75	SKU # MP 271
\$75	SKU # MP 272
\$75	SKU # MP 273
\$75	SKU # MP 274
\$180	SKU # MP 275
\$180	SKU # MP 276





EGR Kts and Parts



EGR Kts and Parts

- Cooler Have Several Sizes
- Vacuum Control Valve
- Linear Egr Control Valve
- Diaphragm Egr Control Valve

Price

Part No SKU

\$90	SKU # MP 271
\$12	SKU # MP 272
\$86	SKU # MP 273
\$70	SKU # MP 274

A reed Valve can be used as a water drain on the egr cooler or we can use a round or flat tesla 1 way gas valve call us to spec size for your application.

Alternators and Kits



Alternators and Kits

- Flat Wire 6 Pol High Voltage Awesome Alternator for HHO
- 6 pole Alternator
- Electric Motor and Alternator for Bench Testing
- 9XG

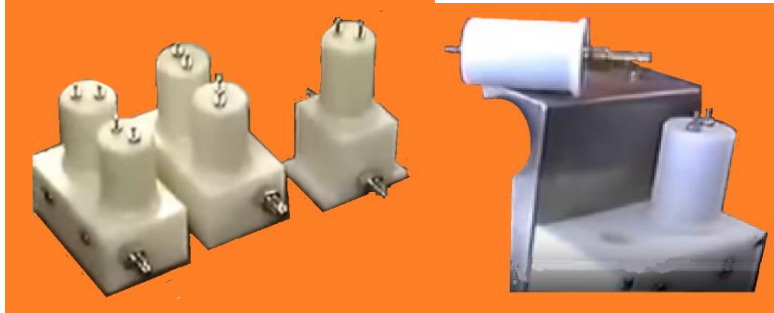
Price

Part No SKU

\$800	SKU # MP 275
\$300	SKU # MP 276
\$800	SKU # MP 277
\$1800	SKU # MP 278



Control Valves Water to Gas



Control Valves

- Needle Valve Solenoid available but
- need some hose spec to order \$120 each

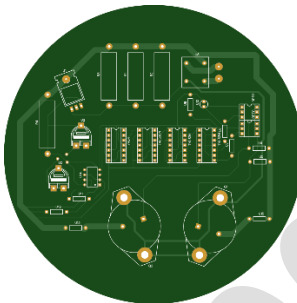
Price

\$68

Part No SKU

SKU # MP 279

EPG Electrical Power Generator



EPG Electrical Power Generator Price

- EPG Circuit Version 1
- EPG Circuit Version 2
- EPG Circuit Version 3
- Cooper Coil Base
- Plastic Round Disc Spacers
- Plastic Oval Dividers for Windings
- Radio Knob style Coil & Disc Spacers Holders

\$68

\$68

\$68

\$68

\$68

\$68

\$68

Part No SKU

SKU # MP 280

SKU # MP 281

SKU # MP 282

SKU # MP 283

SKU # MP 284

SKU # MP 285

SKU # MP 286

Many other Epg Version Parts etc are available



Water to Power Generator



EPG Electrical Power Generator Price

Part No SKU

- | | | |
|------------------------------------|------|--------------|
| • EPG Board Prototype un populated | \$68 | SKU # MP 287 |
|------------------------------------|------|--------------|

Fuel Makers



Fuel Makers

Part No SKU

- | | | |
|---|----------|----------------|
| <ul style="list-style-type: none"> • Duel Maker 91 LPM • 5500 L/h 91% GTNT Gas. • Power consumption: 16-19kw/h, • water consumption: 2.96L/h • Gross weight: 570KGS, • Size: 1400*960*1820mm | \$29,000 | SKU # MP 288 |
| <ul style="list-style-type: none"> • Duel Maker 333.33 LPM • 20000 L/h gas output. • Power consumption, 75-78kw/h 380V three phases, • Water consumption, 10.75L/h • Gross weight: 18,00kg, • Size: 2450*1150*2200mm | \$49,000 | SKU # MP 288-1 |



Ohamasa Systems



Ohmase Systems

	Price	Part No SKU
• Ultra-Vibration Agitator (Water Capacity : 12L)	\$9,335.91	SKU # MP 289
• Ultra-Vibration Agitator (Water Capacity : 12L)with Electrolyzer	\$32,216.91	SKU # MP 290
• Ultra-Vibration Agitator (Water Capacity : 1500L)	\$29,690.15	SKU # MP 291
• Ultra-Vibration Agitator (WaterCapacity:1500L)with Electrolyzer	\$189,076.00	SKU # MP 292
• OHMASAGAS Generator Type-Ⅲ	\$228,101.33	SKU # MP 293
• Power Consumed : about 6.7kW/h • Gas Production rate : about 2000L/h		
• OHMASAGAS Generator Type-2500	\$265,115.37	SKU # MP 294
• Power Consumed : about 8.3kW/h • Gas Production rate : about 2500L/h		



Ohamasa Systems

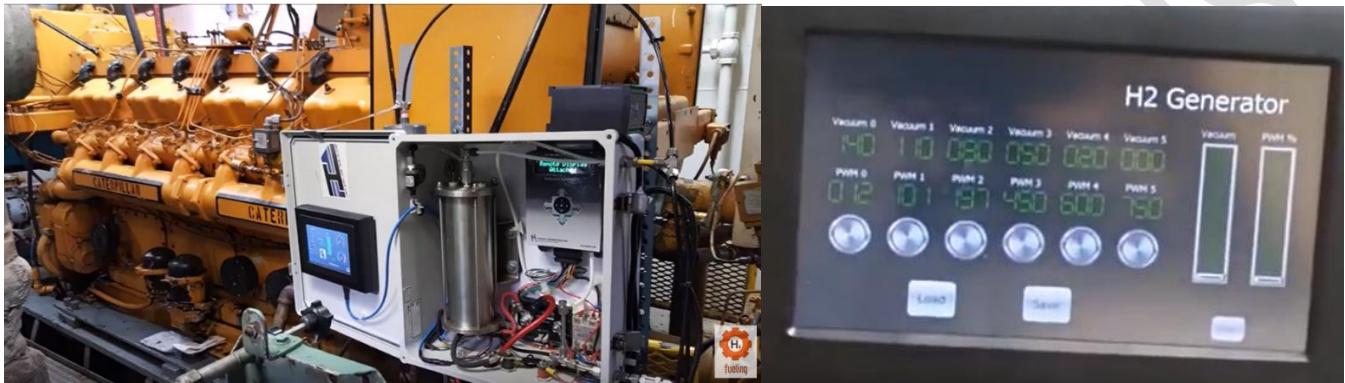
	Price	Part No SKU
• Gas tank : 250L • lpg modified for ohmase gas	\$17,284.76	SKU # MP 295
• Tank Control Set (Compress Unit)	\$19,927.15	SKU # MP 296
• OHMASAGAS Generator Type-500	\$89,115.23	SKU # MP 297
• Power Consumed : about 1.3kW/h • Gas Production rate : about 400L/h		



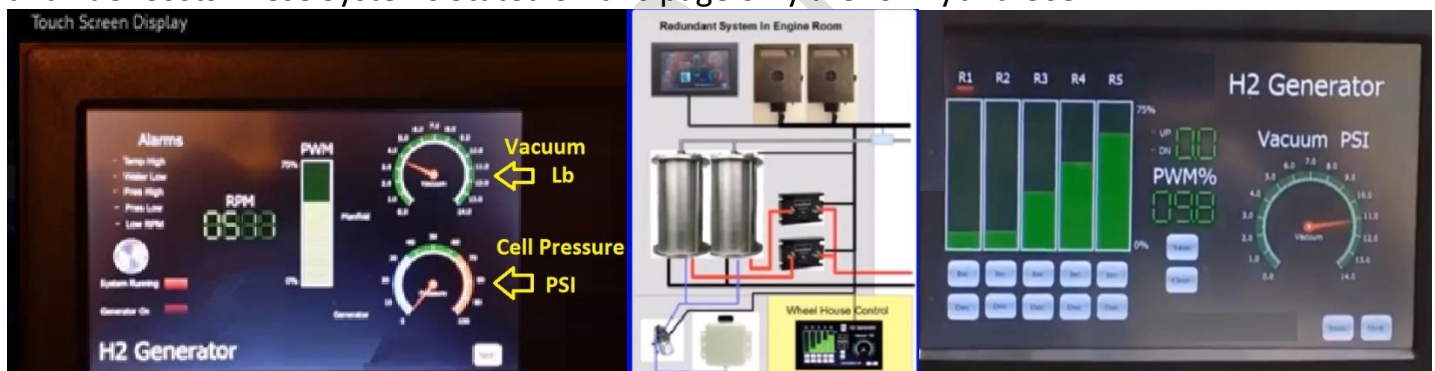
Complete Hybrid on Demand Systems

Complete On Demand Kit Systems

Non Meyers Control this is Electrolysis



We have Systems Based on Engine Size these systems shown above are for hybrid fueling. Prices for H2 Hydrogen fueling on Demand Engine Supplementation Units Cut Emissions and Fuel Costs These Systems Stated on this page only are for Hybrid Use



Code	Engine Size	Kit Weight	Liters of Gas per Minute	PRICE CIF in shipping
SS2	100 to 500	HP Engines	36 Lbs 15 lpm	US \$3900
SS3	100 to 500	Hp Engines	38 Lbs 15 lpm	US \$5200
SS33	400 to 800	Hp Engines	50 Lbs 30 lpm	US \$5800
SS333	1000 to 3000	Hp Engines	65 Lbs 40 lpm	US \$8500
SS3333	1000 to 3500	Hp Engines	85 Lbs 45 lpm	US \$15000
SS33333	3000 +	Hp Engines	105 Lbs 60 lpm	US \$19500



Standard Hot Rod Engines

Chevy



Cubic Size	Configuration	HP	Compression	PRICE	Order Code
383CI STROKER V8		430 HP / 450 FT LBS	10.0:1	\$4,499.00	SSHR383S

Ford



Cubic Size	Configuration	HP	Compression	PRICE	Order Code
306CI STROKER V8		370 HP / 450 FT LBS	10.0:1	\$4,499.00	SSHR306S

Blocks



Blocks

Cubic Size	Configuration	HP	PRICE	Order Code
385CI FORD Bore size is 4.495"	V8	2000 HP.	\$2,925.00	SSHRF2000
385CI FORD Bore size is 4.356	V8	1800 HP.	\$2,725.00	SSHRF1800

Contact US for your Cast or Aluminum Wet Sleeve block All Brands 4, 6, V6 V8 V12



BLOCKS WE INSTALL CERAMIC SLEEVES INTO



HONDA

D16, D17 B16, B17, B18
H22/23, F20, F22, K20, K24



GM

ECOTEC, LS-1, LS-2,
LS-6, LS-7, NORTHSTAR



NISSAN

SR20DET, VQ35DE,
QR25DE



TOYOTA

1ZZ,
2ZZ



SUBARU

EJ20,
EJ25Z



PORSCHE

944 2.5L,
968 3.0L



FORD

4.6L MODULAR,
5.4L MODULAR IRON, DURATEC



SUZUKI

J20



KUBOTA

BT750
D950
B20

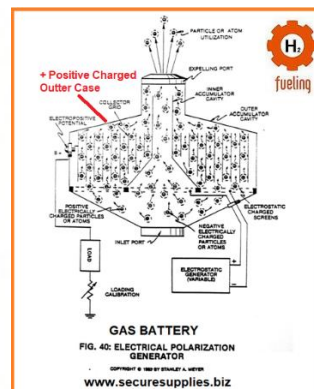


CUMMINS

QST30 B Series ISB/QSB NH/NT
QST60 C Series ISM/QSM N14
ISX/QSX K Series Small V VTA

Most of the others, including, John Deere, Farmall, Allis Chalmers, IH, Case, David Brown, Massey Ferguson, Perkins, Cummins and Kubota are predominantly also sleeved engines which we can offer ceramic sleeves for also. To order contact www.securesupplies.biz
danieldonatelli1@gmail.com

Electronic Polarization Generator -Electron Extraction He fuel line Cell EGR and Intake



Product	Diameter	PRICE	Order Code
ELECTRONIC POLARIZATION GENERATOR	GAS BATTERY	\$225.00	SSHRF2000

Daniel Donatelli

Secure Supplies Group

danieldonatelli1@gmail.com

whatsapp +1 520 949 1659



Generators

OPTION 1 Community Powering 24 hr Run Time 365 Days Continuous 24 hr operations
1000-9000 RPM 5 Year Full Load Warranty



- 150KW \$193,000 CIF NEW PDF Popular **Engine SS150KW**
- 300KW \$350,000 CIF **Engine SS300KW**
- 600KW \$550,500 CIF **Engine SS600KW**
- 900KW \$850,320 CIF **Engine SS900KW**
- 1.2 MW \$960,000 FOB / CIF advise location. **Engine SS1200KW**
- There is No Better Hydrogen Fueled Engine, Premium Industrial and Community Engineering.

Hydrogen Fueled Engines and Power Plants



Secure 50L 1 MW
50 ltr
12 cylinder
1 MW
Consumption
H2 kg/hr
7.88/ 10.38
Low Load/High Load
Retail 1.2 Million
3,440 cu ft /hr
97.35199 Nm3/hr



Secure 60L 1.2 MW
60 ltr
16 cylinder
1,350 KW
Consumption
H2 kg/hr
9.6801/12.58
Low Load/High Load
Retail 1.5 Million
3,803 cu ft /hr
107.70096 Nm3/hr



Secure 91.1.7 MW
91.6 ltr
18 cylinder
1,700 KW
Consumption
H2 kg/hr
11.71/ 15.22
Low Load/High Load
Retail 1.9 Million
4,600 cu ft /hr
130.272 Nm3/hr

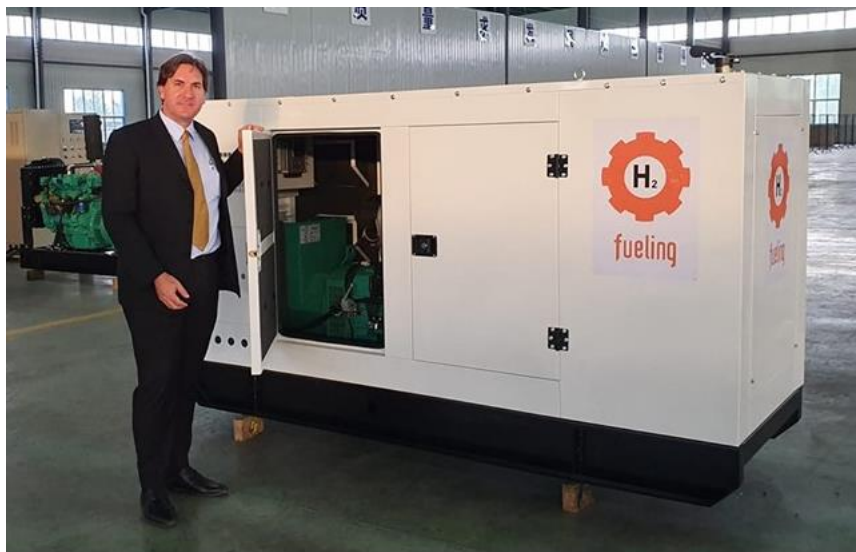
Low Maintenance Costs
47% Fuel Conversion to Power Efficiency Warranty 2 Years Life Span 25 Years

Copyright 2001 Daniel Donatelli © 2001, Daniel Donatelli Secure Supplies All rights reserved.



OPTION 2 Standby Power Only

Recommended for Hydrogen. 2 to 4 Hr Run times Can Run 24 hrs but not recommended for 364/24 hr



1000-3000 RPM

2 Year Warranty

Product Order Code

- [25KW \\$18,800 CIF NEW PDF Popular](#)
- 50KW \$29,600 CIF Engine SS25KW
- 75KW \$32,500 CIF Engine SS25KW
- 100KW \$38,500 CIF Engine SS25KW
- 150KW \$48,500 CIF Engine SS25KW
- 230KW \$98,670 CIF Engine SS25KW
- 300KW \$195,320 CIF Engine SS25KW
- 500KW \$335,500 CIF Engine SS25KW
- 800KW \$381,320 CIF Engine SS25KW
- 1 MW \$456,600 CIF Engine SS25KW
- Prices include Sound lowering case and all Fueling
- and Ignition Systems with advanced features.

Engine SS25KW

Engine SS50KW

Engine SS75KW

Engine SS100KW

Engine SS150KW

Engine SS230KW

Engine SS300KW

Engine SS500KW

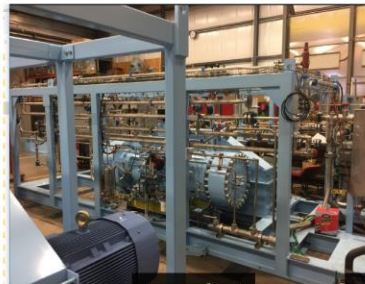
Engine SS800KW

Engine SS1000KW



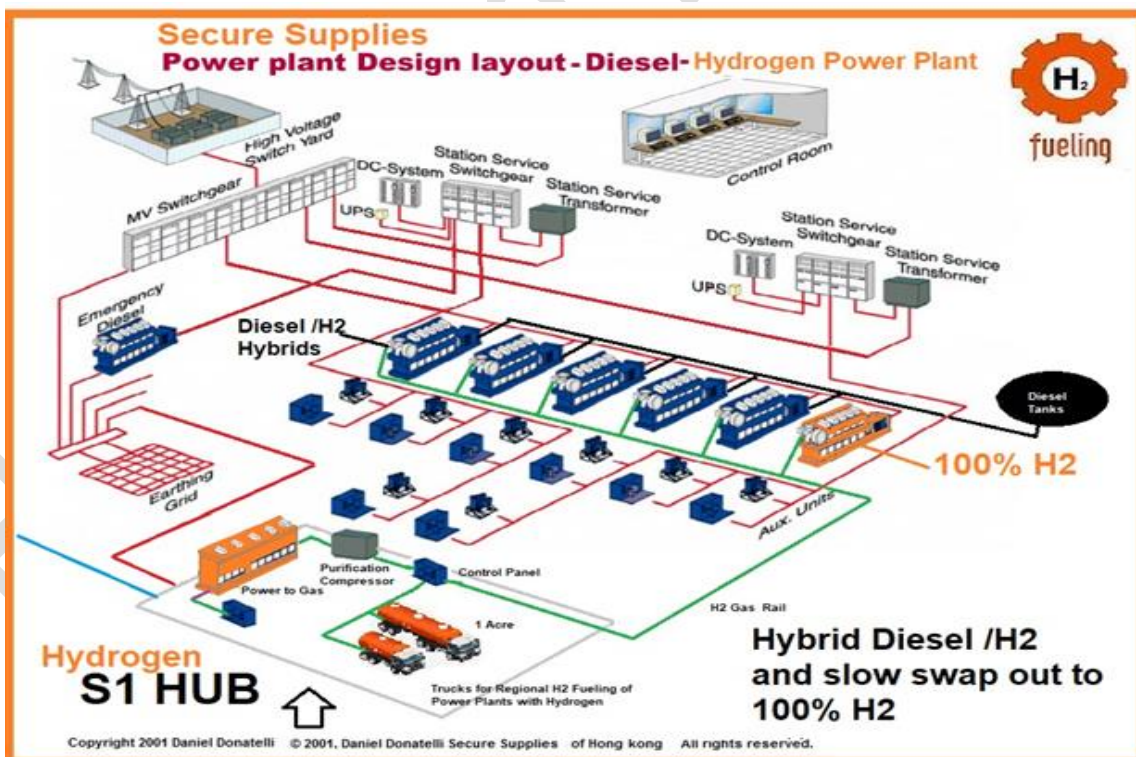
[Over 350 kw H2 Fueling Projects go here](#)

Secure Supplies Group Energy Storage S1



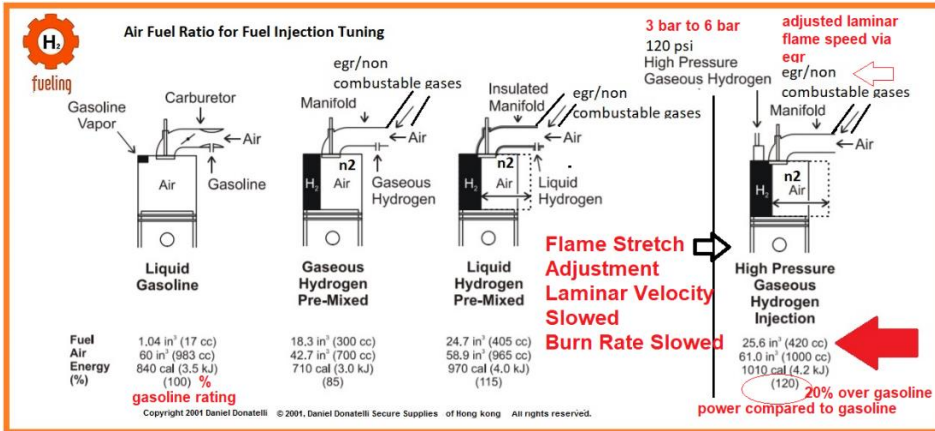
Powerful 1 Mw Energy Storage Solutions
 Capture Spinning Reserve
 Capture and solve Stranded Power.
 Value add Power Roi by making Gas
 Make New Roi incomes by distributing Gas
 Parallel congested Power Grid with Gas Grid
 Create Secure prime Power Back up
 20 Year + Operational Life at full Load.
 Low Yearly and Monthly O & M \$2 to \$4 per kw
 High Efficiency at full load.
 Frequency Activated fuel production
 starts up in seconds

Copyright 2001 Daniel Donatelli © 2001, Daniel Donatelli Secure Supplies of Hong kong All rights reserved.





Useful Reference information



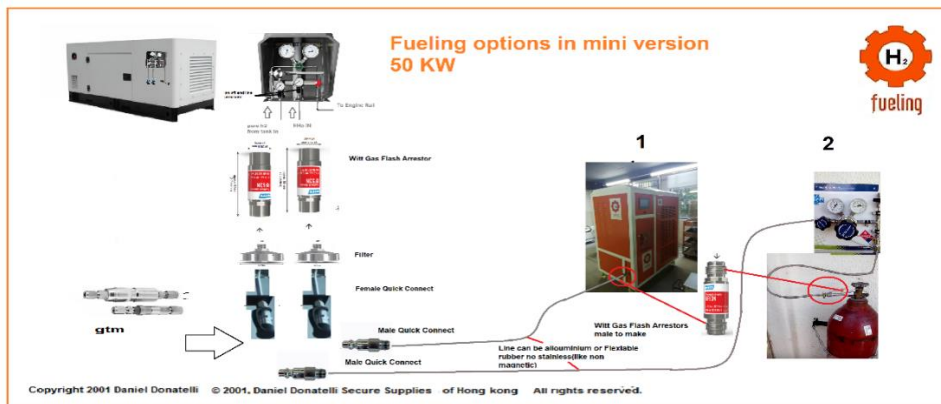
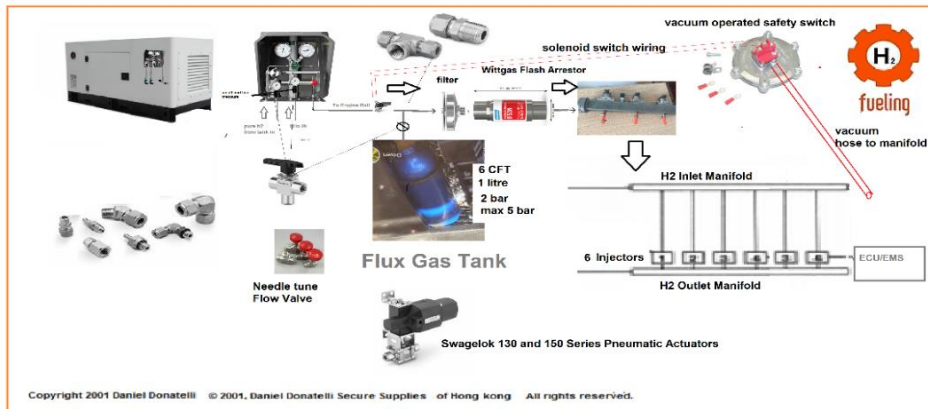
THE MIX

Because of hydrogen's wide range of flammability, hydrogen engines can run on A/F ratios of anywhere from 34:1 (stoichiometric) to 180:1. The A/F

The percent of the combustion chamber occupied by hydrogen

for a stoichiometric mixture: = 29.6% 34:1 by mass. This means that for complete combustion, 34 pounds of air are required for every pound of hydrogen. This is much higher than the 14.7:1 A/F ratio required for gasoline.

Recycle between 15 % and 20% egr Typically a 25 to 30% recirculation of exhaust gas is effective in eliminating backfire. Ignition systems that use a waste spark system should not be used for hydrogen engines.



TDC 14° BTDC, car vary from 12 to 20 BTDC

+ Ground Compression 12:1 to 13:1

Fuel Rail 1bar to 4 bar



Displacement Conversion Chart for Popular Hydrogen Engine Sizes

LITERS	CUBIC INCHES	LITERS	CUBIC INCHES	LITERS	CUBIC INCHES
1.0	61	3.3	200	5.4	330
1.1	67	3.7	225	5.7	345
1.4	86	3.8	229	5.7	350
1.5	92	3.8	231	5.8	351
1.6	96	3.8	232	5.9	360
1.6	97	3.9	238	6.0	366
1.6	97.6	4.0	243	6.0	368
1.6	98	4.1	250	6.1	370
1.7	105	4.1	252	6.2	381
1.8	110	4.2	255	6.4	390
1.9	118	4.2	258	6.6	400
2.0	121	4.3	260	6.6	403
2.0	122	4.3	262	6.9	420
2.1	128	4.3	265	7.0	425
2.2	135	4.4	267	7.0	427
2.3	140	4.5	275	7.0	429
2.4	146	4.6	286	7.2	440
2.5	150	4.7	289	7.3	445
2.5	151	4.8	292	7.4	454
2.6	156	4.9	300	7.5	455
2.6	159	4.9	301	7.7	460
2.8	171	5.0	302	7.8	488
2.8	173	5.0	304	8.2	500
2.9	177	5.0	305	8.8	534
3.0	184	5.0	307		
3.2	198	5.2	318		
3.3	199	5.4	327		

1000CC = 1 LITERS
61.02 C = 1 LITERS



Big Block Ford Displacement Sheet (CID)

Stroke	Bore (in)											
	4.360	4.390	4.420	4.440	4.500	4.530	4.560	4.600	4.625	4.675	4.700	4.705
3.590	429	435	441	445	457	463	469	477	483	493	498	499
3.850	460	466	473	477	490	496	503	512	517	529	534	536
4.150	496	503	509	514	528	535	542	552	558	570	576	577
4.250	508	515	522	526	541	548	555	565	571	584	590	591
4.300	514	521	528	533	547	554	562	572	578	590	597	598
4.375	523	530	537	542	557	564	572	582	588	601	607	609
4.500	537	545	552	557	573	580	588	598	605	618	625	626
4.625	552	560	568	573	588	596	604	615	622	635	642	643
4.750	567	575	583	588	604	612	621	632	638	652	659	661
5.000	597	605	614	619	636	645	653	665	672	687	694	695
5.125	612	621	629	635	652	661	670	681	689	704	711	713
5.250	627	636	644	650	668	677	686	698	706	721	729	730
5.375	642	651	660	666	684	693	702	715	722	738	746	748
5.500	657	666	675	681	700	709	719	731	739	755	763	765
5.625	672	681	690	697	716	725	735	748	756	772	781	782
5.750	687	696	706	712	732	741	751	764	773	790	798	800
5.875	702	711	721	728	748	758	768	781	790	807	815	817
6.000	717	727	737	743	763	774	784	798	806	824	833	835

BIG BLOCK CHEVROLET BORE AND STROKE LIST

Engine Size	Stock Bore	+ .060"-over	Stock Stroke
366	3.935"	3.995"	3.760"
396	4.094"	4.154"	3.760"
402	4.125"	4.185"	3.760"
427	4.250"	4.310"	3.760"
454	4.250"	4.310"	4.000"
Mark 5 — 502 — Mark 6	4.468"	4.530"	4.000"

454 Engines	3.760"	4.000"	4.250"	4.500"	4.750"	4.875"
Stock bore = 4.250"	427"	454"	482"	511"	539"	553"
Bored .030" = 4.280"	433"	460"	489"	518"	547"	561"
Bored .060" = 4.310"	439"	467"	496"	525"	554"	569"
Bored .090" = 4.340"	445"	473"	503"	533"	562"	577"
Bored .100" = 4.350"	447"	476"	505"	535"	565"	580"
Bored .125" = 4.375"	452"	481"	511"	541"	571"	586"

502 Engines	3.760"	4.000"	4.250"	4.500"	4.750"	4.875"
Stock bore = 4.468"	472"	502"	533"	564"	596"	611"
Bored .032" = 4.500"	478"	509"	541"	573"	604"	620"
Bored .062" = 4.530"	485"	516"	548"	580"	612"	629"
Bored .092" = 4.560"	491"	523"	555"	588"	621"	637"

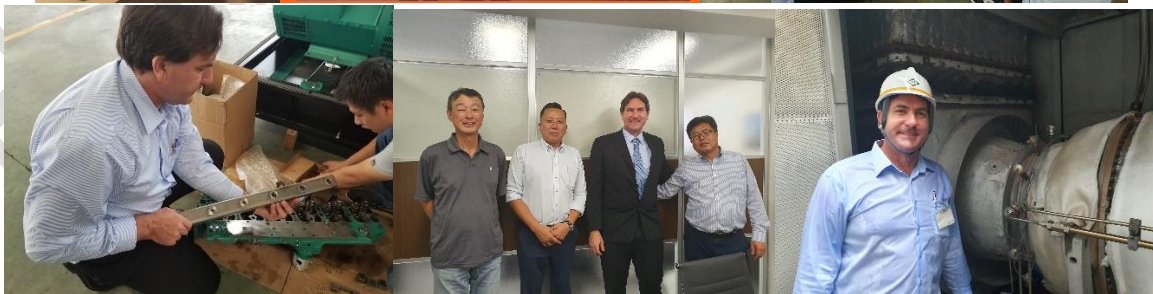


Chevy Bore and Block Sizes

	Stroke ->	3.500	3.780	3.980	4.125	4.250	4.375
352/360/390 Based Engines	Bore	Cubic Inches					
Std 352	4.000	352	380	400	415	427	440
.030 over 352	4.030	357	386	406	421	434	447
.040 over 352	4.040	359	388	408	423	436	449
Std 360/390	4.050	360	390	410	425	438	451
.060 over 352	4.060	363	392	412	427	440	453
.020 over 360/390	4.070	364	394	414	430	443	456
.030 over 360/390	4.080	366	396	416	432	445	458
.040 over 360/390	4.090	368	397	418	434	447	460
.050 over 360/390	4.100	370	399	421	436	449	462
.060 over 360/390	4.110	372	401	423	438	451	465
406/428 Based Engines	Bore	Cubic Inches					
Std.	4.130	375	406	428	442	456	469
.020	4.150	379	409	431	447	460	474
.025	4.155	380	410	432	448	461	475
.030	4.160	381	411	433	449	462	476
.035	4.165	382	412	434	450	463	477
.040	4.170	383	413	435	451	465	478
.045	4.175	383	414	436	452	466	479
.055	4.185	385	416	438	454	468	482
.060	4.190	386	417	439	455	469	483
427 Based Engines	Bore	Cubic Inches					
Std 427	4.233	394	427	448	465	479	493
.017	4.250	397	429	452	468	483	497
.030	4.263	400	432	455	471	486	500
.037	4.270	401	433	456	473	487	501
.047	4.280	403	435	458	475	489	504
.077	4.310	409	441	465	482	496	511
.117	4.350	416	450	473	491	506	520
.142	4.375	421	455	479	496	511	526
Bold Red numbers are factory combinations at factory advertised displacement							



Industry Photos v





Industry Photos



NOTES

1. Shipping let me know which city and what items and I can quote
2. Lead time is allow 3 to 6 weeks normally and due to Christmas etc
3. Payment is Secure By pay pal I will email once I know what you need
4. Shipping is Fedex with tracking number.
5. Sgs Tuv can be Arranged no factory visits but larger engine generators product can be seen before export after ordering and paying deposit.



Terms

Engines and Mini turbines

60% Deposit

40% prior Export

Lead time 70 Days

MW Class Turbines

10% Deposit

40% after 45 Days and Inspections

60% prior to Export

Lead time 70 Days

Deposit and Pre Shipment Payments

All other Design Survey Works

LOI Purchase order and 50% Deposit 50% on completion

WELLS FARGO BANK, N.A.

Oakland branch Ca USA

Account name Daniel Thomas Donatelli

aba routing number 121042882

Account number 3947634956

Savings

Or

Bank of Ayudhya: Branch of Central Phuket

ACCOUNT NAME: Mr. Daniel Thomas Donatelli

ACCOUNT NUMBER: 465 -1 -030 879

SWIFT CODE: AYUDTHBKXXX

ADDRESS: Central Festival Shopping Centre Koh Phuket 83000

TEL : 076 367 005-6



*Thank you to All the Hydrogen Hot Rodders
Making this Happen*



*From Everyone working with your technology
Thank You Stanley A Meyer
Rest in Peace Stan.*